

Cellular Adaptation

Dr. Md. Sadequeel Islam Talukder
M.B.B.S; M. Phil. (Pathology), MACP

4/28/2020

Sadequeel Talukder
www.talukderbd.com

1

Introduction to Pathology

- Pathos means suffering and logos means study. Literally, Pathology is the study of suffering.
- Pathology is the bridging discipline between basic science and clinical practice.
- Pathology deals with the structural and functional changes in the cells, tissues and organs that underlie diseases.
- Pathology attempts to explain the "whys" and "wherefore" of the signs and symptoms manifested by the patients by the use of molecular, microbiologic, immunologic and morphologic techniques.

4/28/2020

Sadequeel Talukder
www.talukderbd.com

2

Branches of Pathology

- General pathology and
- Systemic pathology

4/28/2020

Sadequeel Talukder
www.talukderbd.com

3

General Pathology

General pathology is concerned with basic reactions of cells and tissue to abnormal stimuli that underlie all diseases.

Systemic Pathology

Systemic pathology or special pathology deals with the specific responses of specialised organs and tissue to more or less well defined stimuli.

4/28/2020

Sadequeel Talukder
www.talukderbd.com

4

Core of Pathology in disease process

- Etiology (cause)
- Pathogenesis (mechanisms of development of disease)
- Morphologic changes (the structural alteration)
- Clinical significance (functional consequences of the morphologic changes)

4/28/2020

Sadequeel Talukder
www.talukderbd.com

5

Cellular Responses to Injurious Stimuli

- | | |
|---|--|
| <ul style="list-style-type: none">• Cellular Adaptation<ul style="list-style-type: none">– Atrophy– Hypertrophy– Hyperplasia– Metaplasia | <ul style="list-style-type: none">• Acute cell injury<ul style="list-style-type: none">– Reversible cell injury<ul style="list-style-type: none">• Cellular swelling• Fatty change– Cell death<ul style="list-style-type: none">• Necrosis• Apoptosis |
| <ul style="list-style-type: none">• Chronic Cell injury<ul style="list-style-type: none">• Intracellular accumulation• Pathologic calcification.• Sub-cellular Alteration and cell inclusions | |

4/28/2020

Sadequeel Talukder
www.talukderbd.com

6

Cellular Adaptation

- Cellular adaptation is intermediate state between the normal and the injured cells.
- In somewhat more excessive physiologic stress or some pathologic stimuli a number of physiologic and morphologic changes achieved an altered steady state, preserving the viability of the cells, is called cellular adaptation.

4/28/2020

Sadequeel Talukder
www.talukderbd.com

7

Etiological Types of Cellular Adaptation

- **Physiologic Adaptation**
 - Usually represents responses of the cells to normal stimulation by hormones or endogenous chemical substances, e.g. enlargement of breast and induction of lactation by pregnancy.
- **Pathologic Adaptation**
 - May share the same underlying mechanism, but they provide the cells with ability to survive in their environment and perhaps escape injury.

4/28/2020

Sadequeel Talukder
www.talukderbd.com

8

General Mechanism of Cellular Adaptation

- Up- or down-regulation of specific cellular receptors involved in metabolism of certain components, e.g. in the regulation of cell surface receptors involved in the uptake and degradation of low-density lipoproteins (LDL).
- Induction of new protein synthesis by the target cells, e.g. heat-shock response.
- Production of one type a family of proteins to another or markedly overproducing one protein e.g. cells producing various types of collagens and ECM proteins in chronic inflammation and fibrosis.

4/28/2020

Sadequeel Talukder
www.talukderbd.com

9

Adaptation involves all steps of cellular metabolism of proteins – receptor binding, signal transduction, transcription or regulation of protein packaging and release.

4/28/2020

Sadequeel Talukder
www.talukderbd.com

10

Morphological Types of Cellular Adaptation

- Atrophy
- Hypertrophy
- Hyperplasia
- Metaplasia

4/28/2020

Sadequeel Talukder
www.talukderbd.com

11

Atrophy

- Atrophy is an adaptive response in which there is shrinkage in the size of the cells by loss of cell substances.
- When a sufficient number of cells are involved, the entire tissue or organ diminishes in size or become atrophic

4/28/2020

Sadequeel Talukder
www.talukderbd.com

12

Causes of Atrophy

- Decreased work load
- Loss of innervations
- Diminished blood supply
- Inadequate nutrition
- Loss of endocrine stimulation
- Aging

4/28/2020

Sadequeel Talukder
www.talukderbd.com

13

Examples of Atrophy

- When a limb is immobilised in plaster cast or when muscle become paralysed from loss of innervations, as in poliomyelitis, atrophy of the muscle occur.
- In late adult life, the brain undergoes progressive atrophy, presumably due to atherosclerosis narrows its blood supply and the sex glands shrink with depletion of endocrine stimulation.

4/28/2020

Sadequeel Talukder
www.talukderbd.com

14

Etiological Types of Atrophy

- **Physiologic atrophy**
 - loss of endocrine stimulation following menopause.
- **Pathologic atrophy**
 - Loss of nerve.

4/28/2020

Sadequeel Talukder
www.talukderbd.com

15

Mechanism of Atrophy

- Atrophy represents a reduction in structural components of cells.
- The cell contains fewer mitochondria and microfilaments and lesser amount of endoplasmic reticulum.
- There is finely regulated balance between protein synthesis and degradation in normal cells. Either decreased synthesis or increased catabolism or both may cause atrophy.

4/28/2020

Sadequeel Talukder
www.talukderbd.com

16

- Slight increase of degradation over a long period of time may result in atrophy.
- Intracellular non-lysosomal proteinases play a role in such protein degradation.
- Atrophy also accompanied by marked increases in number of autophagic vacuoles within the cells that contain fragments of cell components (e.g. mitochondria, endoplasmic reticulum), which are destined for destruction, into which the lysosome discharge their hydrolytic contents. The cellular components are then digested.

4/28/2020

Sadequeel Talukder
www.talukderbd.com

17

Hypertrophy

- Hypertrophy is one type of adaptive response in which there is increase in size of cells resulting from synthesis of more structural components in response to increased functional demand or by specific hormonal stimulation.

4/28/2020

Sadequeel Talukder
www.talukderbd.com

18

Types of hypertrophy

- Physiologic hypertrophy
 - Pathologic hypertrophy
- Examples

- **Physiologic hypertrophy**
 - Hypertrophy of myometrium during pregnancy stimulated by oestrogen
 - Hypertrophy of skeletal muscle of muscle-builders induced by workload.
- **Pathologic hypertrophy**
 - Hypertrophy of cardiac muscle induced by increased workload in hypertension or chronic haemodynamic overload

4/28/2020

Sadequeel Talukder
www.talukderbd.com

19

Hyperplasia

- Hyperplasia is one type of cellular adaptation in which there is an increase in number of cells in an organ or tissue, which may cause increased volume.
- Hyperplasia takes place if the cellular population is capable of synthesising DNA, permitting mitotic division.
- Occurs in labile and stable cells

4/28/2020

Sadequeel Talukder
www.talukderbd.com

20

Types of Hyperplasia

- Physiologic Hyperplasia
 - Hormonal Hyperplasia
 - Compensatory Hyperplasia
- Pathologic Hyperplasia

4/28/2020

Sadequeel Talukder
www.talukderbd.com

21

Hormonal Physiologic Hyperplasia

- It occurs due to hormonal stimulation in response to physiologic demands,
 - e.g. proliferation of glandular epithelium of the female breast at puberty and during pregnancy, and hyperplasia of pregnant uterus.

4/28/2020

Sadequeel Talukder
www.talukderbd.com

22

Compensatory Physiologic Hyperplasia

- It occurs when a part of an organ is removed,
 - e.g. hyperplasia that occurs when a portion of liver is removed.

4/28/2020

Sadequeel Talukder
www.talukderbd.com

23

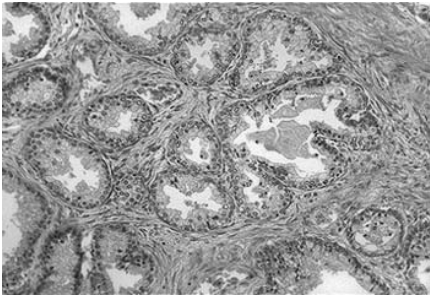
Pathologic Hyperplasia

- Most forms of pathologic hyperplasia are instances of excessive hormonal stimulation or are effects of growth factors on target cells,
 - e.g. hyperplasia of endometrium, hyperplasia of prostate, hyperplasia of connective tissue cells in wound healing, skin warts.

4/28/2020

Sadequeel Talukder
www.talukderbd.com

24

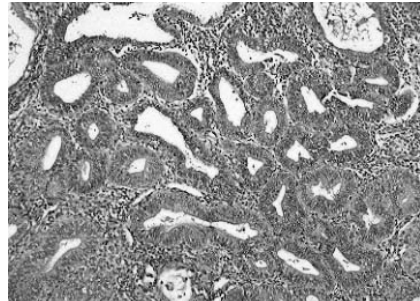


Hyperplasia of Prostate

4/28/2020

Sadequeel Talukder
www.talukderbd.com

25



Hyperplasia of Endometrium

4/28/2020

Sadequeel Talukder
www.talukderbd.com

26

Metaplasia

- Metaplasia is one type of adaptive response in which one adult cell type is replaced by another cell type.
- It represents an adaptive substitution of cells more sensitive to stress by cell types better able to withstand the adverse environment.

4/28/2020

Sadequeel Talukder
www.talukderbd.com

27

Examples of Metaplasia

Epithelial Metaplasia

- **Columnar to Squamous Metaplasia:**
 - Occurs in respiratory tract in response to irritation. In habitual cigarette smoker, the normal columnar ciliated epithelial cells of the trachea and bronchi are often replaced focally or widely by stratified squamous epithelial cells.

4/28/2020

Sadequeel Talukder
www.talukderbd.com

28

- Stone in the excretory duct of the salivary glands, pancreas or bile ducts may cause replacement of normal columnar epithelium by non-functioning stratified squamous epithelial cells.
- Deficiency of vitamin A induces squamous metaplasia in the respiratory epithelium.
- Squamous metaplasia of endocervical epithelium in response to chronic inflammation.

4/28/2020

Sadequeel Talukder
www.talukderbd.com

29

- *The influences that predispose to such metaplasia, if present, may induce cancer transformation in metaplastic epithelium. Thus common form of cancer in respiratory tract is composed of squamous cells.*

4/28/2020

Sadequeel Talukder
www.talukderbd.com

30

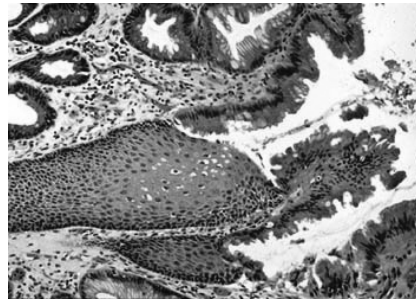
Squamous to columnar cell metaplasia:

- **Barrett's oesophagus**, in which the squamous oesophageal epithelium is replaced by gastric columnar cells. The resulting cancers that may arise are glandular (adeno) carcinoma.

4/28/2020

Sadequeel Talukder
www.talukderbd.com

31



Barrett's esophagus

4/28/2020

Sadequeel Talukder
www.talukderbd.com

32

Mesenchymal Metaplasia

- Fibrous connective tissue cells may become transformed to osteoblasts or chondroblasts to produce bone or cartilage where it is normally not encountered.
- This occurs particularly in foci of injury but occasionally with no cause.

4/28/2020

Sadequeel Talukder
www.talukderbd.com

33

Pathogenesis of Metaplasia

- Metaplasia is thought to arise from genetic reprogramming of stem cells that are known to exist in most epithelium or of undifferentiated mesenchymal cells, present in connective tissue.
- Chemical, vitamins or growth factors most likely play a role in such metaplasia.

4/28/2020

Sadequeel Talukder
www.talukderbd.com

34

Thank You

4/28/2020

Sadequeel Talukder
www.talukderbd.com

35